



View to a thrill

Combining a contemporary structure with classic interior, this newly renovated Sydney home is a triumph on all levels.

STORY **GERALDINE CARDOZO** PRODUCED BY **MADELEINE REUTERSWARD**
PHOTOGRAPHY **ANDREW LEHMANN**



The dining room can be opened up to the terrace to extend the entertaining space. Dining table (indoors) from Grange Furniture. Antique dining chairs from Salvage. Outdoor dining table by Brian Potts. **OPPOSITE** Vintage Argentinian rug from Salvage. Pool by Walden Pools. For Where To Buy, see page 198.



A decade after moving in with their three young boys, the owners of this three-level Sydney harbourside home decided the time had come for a much-needed restructure and revamp. “Have you ever lived with teenage boys?” says Stephanie Phillips, who wanted to rezone the top floor to give each of her now-adolescent sons (James, 18, Matt, 15, and Charlie, 13) their own space and to reclaim part of the house for herself and husband Lindsay.

Top of the brief to architect David Katon, of Burley Katon Halliday, was to transform the rabbit warren-like layout of the entry level – previously home to the kitchen, dining room, sitting room and office – into a vast open-plan entertaining space which would make the most of the home’s harbour views. Rezoning the first floor was a must too, in order to give each member of the family their own retreat – bedrooms with ensuites for the boys and a large main bedroom suite (including ensuite, dressing room and dedicated shoe storage) with private terrace.

The couple also took the opportunity to address a design issue that had been bugging them for years – an awkward staircase at the front of the house which “took up valuable space, spoilt the outlook and just looked terrible,” Stephanie says. “We wanted to build something that would lead from the verandah on the second floor, right down to the pool without interrupting the view.”

Having decided to leave the footprint of the house intact and retain many of its striking Art Deco architectural features, Stephanie and Lindsay tackled the task of modernising the

interiors and knocking out a few of the internal walls to make the layout more fluid and space more liveable. “The interior was reorganised to suit our lifestyle and opened to northern light on all levels,” Stephanie says.

The entryway leads to an open-plan living/dining area that spills out onto a new wraparound terrace with views down to the pool and out across the water. A spacious island kitchen, accessed directly from the hall, is tucked around the corner from the living area. A cosy study at the front of the house, off the kitchen, offers a private spot for reading or writing. Walk down another level to the ground floor and you’ll find the family room and guest accommodation.

Sleek, durable and elegant materials and finishes give the house a fresh, yet classic, appeal. Keen to keep a uniform ▶

ABOVE LEFT An island bench and splashback in Brescia Choccolato marble is a dramatic counterpoint to the soft beige cabinetry. Marble from Euro Marble. Joinery by Timberline Joinery.

ABOVE RIGHT Stephanie is a passionate collector of antiques, especially ones she can use regularly, such as the writing desk and chairs in the study. Chairs, desk and carved stool

from Salvage. Coffee table by Brian Potts for Salvage. Painting from Venice.

OPPOSITE The family, including birman cat Neo, loves the cosy traditional decor of the living room. Grandfather clock from Salvage. Sofa from Grange Furniture. Cushions and throw from Pond. Antique coffee table from London. Artwork by Helen Norton. For Where To Buy, see page 198.

Note: Paint colours are reproduced as accurately as printing process will allow.

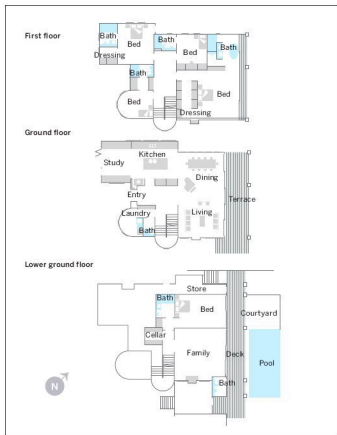
With such an enviable view, the main bedroom ensuite is the ideal place for Lindsay and Stephanie to unwind. Travertine tiles and Brescia Chocolate marble benchtop from Euro Marble. Agape Spoon bath from Artedomus. Antique French chair from Salvage. For Where To Buy, see page 198.





TRADE SECRETS

Classic furniture can add personality to any decor. "I love the contrast of the antique furnishings with the more modern structure," says homeowner Stephanie Phillips, pictured left with youngest son Charlie and the family's pug, Snuffles. "Her looms and vintage pieces have a story to tell and bring an extra welcoming dimension to the home."



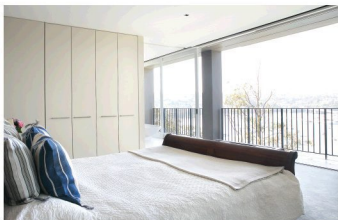
◀ finish throughout the house, Stephanie and Lindsay repainted the walls and woodwork a serene Dulux Beige Royal. A blonde crosscut travertine was used for all floors inside and out except the bedrooms, with underfloor heating installed to take the chill off the tiles in winter.

In the kitchen, an island bench with striking Brescia Chocolate marble top is a stylish and spacious communal hub for entertaining or rustling up a family meal. A matching splashback provides a focal point along the wall of glossy beige cabinetry and ties the scheme together.

The same marble was also used as a feature on the vanity in the main bedroom's ensuite, but the Italian-designed freestanding Spoon bath is the real eye-catcher in this room. Positioned in front of sliding glass doors with views out over the water, it's a great spot to unwind after a busy day.

Outside, David redesigned the garden hardscaping to mirror the home's sleek exterior. At the front of the house, three rows of tiered planting beds and travertine-clad steps leading down from the gate to the front door make an elegant, and dramatic, statement. At the bottom of the stairs, a carefully placed stepping stone invites visitors to hop over a narrow pond – a contemporary take on the moat – and into this surprising family home. "The stepping stone is such fun," Stephanie says. "Almost everyone who walks down the stairs from the street for the first time says 'wow!'"

BKH
 Burley Katon Halliday, Paddington, NSW; (02) 9332 2233
 or www.bkh.com.au.



TOP Continuing the decorating theme of the house, the main bedroom features a mix of antique pieces and newer furniture in classic designs. Bed and bedside tables from Grange Furniture. Cushions from Camargue. Antique crystal lamps from Salvage. Fabrica Dolce carpet in Imperia from Whitecliff Imports. Artwork by Adam Bowyer.

BOTTOM A wall of cabinetry – including dedicated shoe storage – separates the main bedroom from the ensuite. Joinery by Timberline Joinery. **OPPOSITE** Travertine-clad steps and a stepping stone over a 'moat' lead visitors from street level to the main living areas on the ground floor. Sphere from Salvage. For Where To Buy, see page 198.

